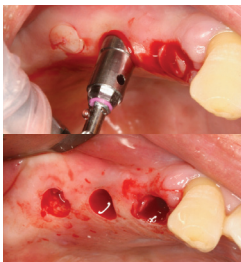


Surgical Accessory Kit



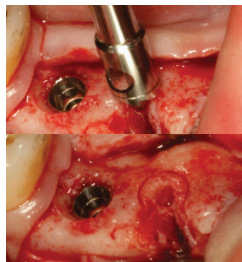
This product is the Neo Surgical Accessory Kit, consisting of dental implant surgical tools (drill, surgical tools, and driver) made of medical-grade materials, including stainless steel.



Tissue Punch



This tool is used to carve out tissue to enable implantation without opening the gum. (1,000 rpm)



Dia. Marker



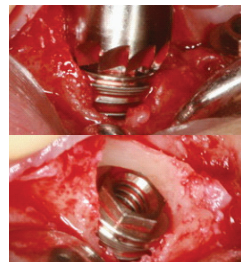
This tool is to mark rapidly and accurately the diameter and spacing of the fixtures to be implanted, as well as the exact locations for implantation on the bone. (1,200rpm)



Bone Planer



This tool is to smooth out uneven surfaces of the bone when implanting. (1,200rpm)



Bone Profile



After removing the coverscrew or the Healing Abutment, this tool is used to trim bone which has grown up around the upper part of the fixture and the surrounding area. (50rpm)



QuickTight



This tool allows for the quick, easy attaching of the Cover Screws, Healing Abutments, Abutment screws, and other components. (500~1,000rpm / 1~2Ncm)